



The ACE Project Newsletter

- Advocating for Clinical Excellence - Transdisciplinary Palliative Care Education -



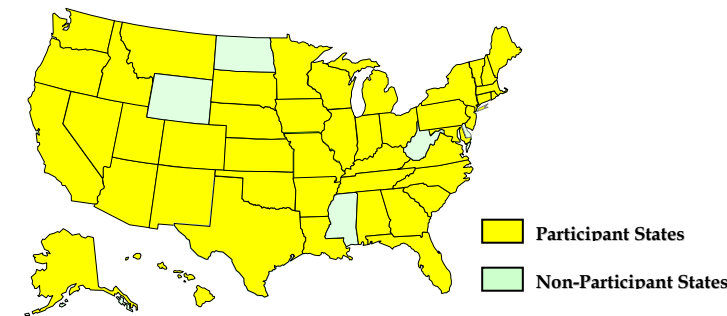
Happy Holidays

Happy holidays! This will be our last ACE Project Newsletter. Thank you for your support and commitment to the ACE Project. The ACE Project would not have been a success without the hard work you do for palliative care, patients and their families. We hope that the ACE Project has been a life-changing experience for you, both personally and professionally. We wish you the best in 2011 and evermore!

The ACE Project is working on multiple future publications. We are planning a special issue of the *OMEGA Journal*, a data manuscript, and a round table discussion with ACE faculty. Please check out our website www.cityofhope.org/aceproject periodically for updates on these works.

Below is a brief summary of our four ACE cohorts:

- A total of 301 psychologists (14%), social workers (51%) and spiritual care professionals (35%) representing 216 different institutions participated in the ACE Project.
- Through the 6 and 12-months follow-up surveys, participants expressed that the ACE Project enhanced awareness and commitment to palliative care, felt encouraged and inspired to continue work in palliative care, and felt like they were part of a community.
- The most common obstacle participants confronted with regarding implementation of their goals was lack of time to devote to their project. Other challenges include: limited organizational support, lack of staffing and insufficient funding.
- Participants came from 45 states and Washington, D.C. (see map below).



Inside this Issue:

<i>ACE Project Summary</i>	1
<i>Highlights from the Reunion Conference</i>	2
<i>Resources</i>	3
<i>Upcoming Educational Opportunities</i>	6
<i>Pictures from the Reunion Conference</i>	7

ACE Project Team

Principal Investigator

Shirley Otis-Green, MSW, LCSW, ACSW

Co-Investigators

Betty Ferrell, PhD, FAAN

Marcia Grant, RN, DNSc, FAAN

Staff

Lisa Kilburn, BA

Eunice Yang, MPH

Faculty

Terry Altilio, MSW, ACSW

Rev. Pamela Baird, AA

Rev. Ken Doka, PhD

Julia Kasl-Godley, PhD

Betty Kramer, PhD, MSSW

Lisa Lynne, Professional Harpist

Maren Spolum, BA

Robert Twillman, PhD

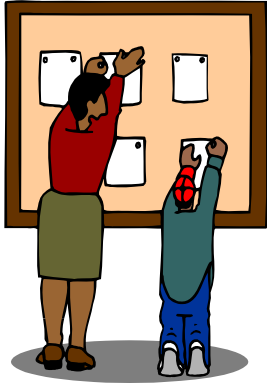
Newsletter Editor

Eunice Yang, MPH



Comments,
 Questions,
 Suggestions:
 Please contact
 Eunice Yang at
eyang@coh.org

Highlights from the ACE Reunion Conference October 24 - 26, 2010



Palliative Care Advocate



The ACE Reunion Conference took place at the Westin Pasadena Hotel in Pasadena, CA on October 24-26, 2010 and was a great success. It was wonderful reuniting and catching up with colleagues! A hundred and nineteen previous ACE participants attended the Reunion and came from 34 states to share their accomplishments about their ACE Project change efforts. A variety of plenary sessions were presented by our ACE Faculty on topics such as leadership, mentorship, collaboration, research and publication skills. Former ACE Project Coordinator, Maren Spolum, moderated an insightful participant panel discussion with three ACE participants: Debra Jarvis, Raegan Radenheimer and Cindy Tinker. Each participant shared their ACE Project and offered useful information and resources for participants.

A highlight of the Reunion was the interactive poster sessions where participants presented posters summarizing their change efforts and demonstrating their on-going commitment to improve the delivery of palliative care. The poster sessions offered participants the opportunity to demonstrate their expertise. All 60 posters were very impressive and it was evident that each presenter worked hard on them. Thirty award recipients, 10 Advocacy Honors and 20 Awards of Merit, were honored with a plaque and a monetary award for their outstanding accomplishments and leadership skills. Below are the award recipients for each category:

Advocacy Honors

Pamela Gerber, Eric Holmstrom, Marie Jankowski, Sara Moore, Rod Myerscough, Linda Piotrowski, Betty Skonieczny, Alison Vandergrift, Karen Vrtunski, and Sharla Wells-Di Gregorio.

Awards of Merit

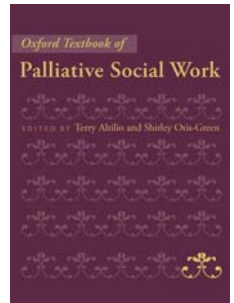
Betty Bachman, Debra Chase, Donnelle Daly, Paul Galchutt, Nora Gonzalez, Leslie Griffith, Daleasha Hall, Debra Jarvis, Jane Knowles, Terry Livengood, Peg McGonigal, Patricia Lyndale, Frances Nedjat-Haiem, Margaret O'Neill, Sonia Quinones, Raegan Radenheimer, Beverly Richardson, Katherine Supiano, Stacy Terashita, Cindy Tinker, and Dayna Wood.

The Reunion Conference concluded with an award luncheon where all participants were presented with a certificate of completion for the ACE Project and a *Palliative Care Advocate* pin to recognize work toward their project goals and successful completion of the project. Participants' supervisors were notified of this accomplishment. Congratulations to all ACE Reunion Conference participants for completing the ACE Project!

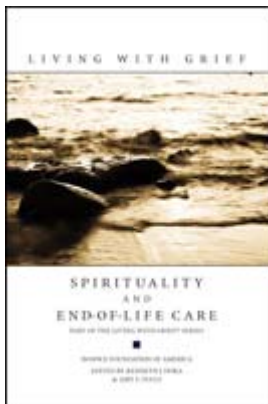


New Resources from ACE Faculty

The **Oxford Textbook of Palliative Social Work** is filled with 84 chapters (many contributed by ACE participants) and edited by two leading palliative social workers (Terry Altilio and Shirley Otis-Green). This comprehensive textbook provides clinicians researchers, policy-makers, and academics with content to inform and enrich the guidelines recommended by the National Consensus Project and the National Quality Forum Preferred Practices. It is designed to meet the needs of health social work professionals who seek to provide culturally sensitive biopsychosocial-spiritual care for patients and families living with life-threatening illness. The anticipated publication date for this textbook is February 2011. For more information, see:



<http://www.oup.com/us/catalog/general/subject/Medicine/PalliativeMedicine/?view=usa&ci=9780199739110>.



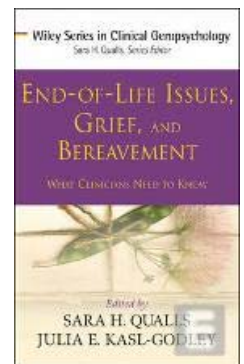
Living with Grief: Spirituality and End-of-Life Care is an accompanying book for the Hospice Foundation of America's 2011 *Living with Grief* program. Filled with 17 chapters, (several from ACE faculty) this manual is filled with important information on offering insightful and useful spirituality at the end of life, the role of spirituality at the end of life, and faith-based practices and teachings observed in North America. The 2011 National teleconference, *Spirituality at the End of Life* will be held on April 13, 2011. The teleconference consists of a group of expert panelists including ACE faculty members Ken Doka and Betty Kramer. More information on the Hospice Foundation of America's 2011 *Spirituality and End-of-Life Care* teleconference and book is available at:

<http://www.hospicefoundation.org/2011program>.

End-of-Life Issues, Grief, and Bereavement: What Clinicians Need to Know

is part of the Wiley Series in Clinical Geropsychology that includes thorough and informative answers to complex questions frequently asked by patients, their families and caregivers and also by professionals. The editors Sara Qualls and Julia Kasl-Godley (an ACE faculty member) collaborated with an international team of contributors (including Shirley Otis-Green) in providing mental health professionals a framework for creating the competencies needed to work with end-of-life care issues, challenges, and opportunities. For more information, go to:

http://www.amazon.com/End-Life-Issues-Grief-Bereavement/dp/0470406933/ref=sr_1_1?ie=UTF8&s=books&qid=1289241805&sr=1-1.



Two Worlds One—Still the Moon is a collection of Lisa Lynne's original songs along with the talents of Aryeh Frankfurter and words written and sung by Molly Pasutti. To order, go to: <http://www.lisalynne.com/music.html>. Lisa Lynne created a special compilation CD, Circle the Sun, which was given to ACE participants who attended the Reunion Conference.



Recommended Resource

Deidre Scherer is an artist who creates unique thread-on-fabric portraits of the dying. Deidre's inspiring work was incorporated into the ACE curriculum at the Reunion Conference this past October. For more information on Deidre's work, please visit her at www.dscherer.com or email her at deidre@dscherer.com.

DEIDRE SCHERER EXHIBITIONS ON DYING

"Her portraits are a collective homage to the process of transition from what we call life to what we call death... -and we realize that death, like birth, involves a sacred labor."

...Sherry Chayat, Syracuse Herald American

In her medium of thread-on-fabric, Scherer created two exhibitions that facilitate a community dialogue about dying and death as a natural part of life.

Surrounded by Family and Friends is a series of six life-sized tableaus that depict intergenerational and culturally diverse family groups and individuals who are caring for a loved one who is dying.

The Last Year, a series of nine works, portrays the final months in the life of an elderly woman -chronicling the woman's journey toward death, from the onset of her decline, through reprieves of renewed strength, and finally, to acceptance and release.

Exhibitions:

The Last Year and **Surrounded by Family and Friends** can be scheduled at gallery and museum venues, often starting a process of collaboration between schools, museums, organizations and business within each community.

Reproduction:

With permission from the artist, Scherer's images can be used in books, periodicals, brochures, films, web sites and slides for digital presentations.

Prints:

High resolution, archival-quality prints of her works are available for classrooms, conferences, and gifts.

Presentations:

Scherer's visual lectures reveal how she pioneered 'thread on fabric' as a fluid intimate medium, ideal for narrative expression. Her process is a way to listen and meditate. The development of her technique coincides with the compelling inspiration of her work that looks unflinchingly at aging and mortality.

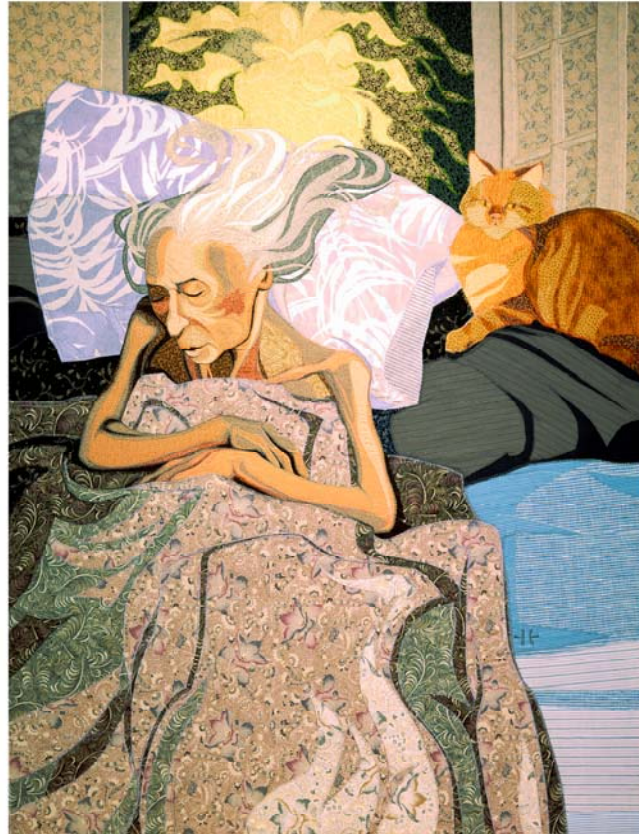
Workshops:

Workshops are designed for different audiences, classes and community groups by utilizing hands-on art making, drawing and guided investigations of her art work.

Commissions:

Scherer develops concepts for public and site-specific art work. For commissioned portraits, she engages her models through direct sittings or works with existing visual materials.

Contact the artist: **Deidre Scherer**
PO Box 156
Williamsville, VT 05362 USA
802-348-7807
www.dscherer.com
deidre@dscherer.com



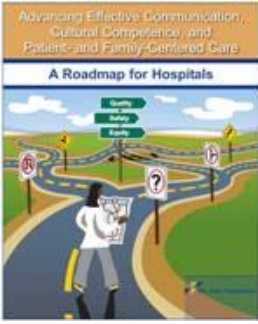
Open Window, thread on layered fabric, 49 x 37" from Surrounded by Family & Friends
© Deidre Scherer 2010

Deidre Scherer's work is shown worldwide including solos at the Baltimore Museum of Art; the Maltwood Art Museum, Victoria, BC; the Everson Museum of Art, Syracuse, NY; and the Hebrew Union College Museum in New York City. She is featured in the documentary film, "Holding Our Own: Embracing the End of Life", shown at the Museum of Fine Arts, Boston and on VPT. Her images are reproduced widely in publications such as the American Journal of Nursing; and OWL's 2010 Mother's Day Report.

Scherer received fellowships from the Vermont Arts Council and the Open Society Institute's Project on Death in America. The American Academy of Hospice & Palliative Medicine honored her with their 2008 Humanities Award. The Rhode Island School of Design recognized her with their 2010 Alumni Association Award for Artistic Achievement "for the innovative medium of textile art she has developed, and for her thought-provoking investigations of our society's views of aging, reflections on life, death, family relationships and the welfare of future generations."

Collected privately throughout the United States, England, and Canada, Scherer's work is also found in the public collections of the Museum of Science in Boston, MA; Dartmouth College, NH; St. Mary's Hospital, Rochester, NY; and the Baltimore Museum of Art.

Heads-Up Opportunity



Advancing Effective Communication, Cultural Competence, and Patient- and Family-Centered Care: A Roadmap for Hospitals is a monograph developed by the Joint Commission that outlines recommendations regarding patient-centered communication to assist hospitals tackle patient needs, and follow the new Patient-Centered Communication standards, which will become applicable in 2012. We encourage you to participate in committees at your institution to address the Joint Commissions' recommendations regarding patient care. To download this monograph, please go to:

<http://www.jointcommission.org/assets/1/6/ARoadmapforHospitalsfinalversion727.pdf>.

Announcement

Congratulations to ACE faculty member, Dr. Bob Twillman on his new position as the Director of Policy and Advocacy with the American Academy of Pain Management. The American Academy of Pain Management provides educational information to health professionals so they can network and work together in order to offer the best care for their patients. For more information on the American Academy of Pain Management, please go to www.aapainmanage.org. You can contact Dr. Twillman via email at btwillman@aapainmanage.org.



Reflection

For over forty years, Reverend Frederick Reklau has served as a Lutheran pastor in the Chicago area. The past nine years, he has trained as an intentional interim pastor. His inspirational poem below "Cure vs Healing" is from his book *Thesis on Cure (and Healing)*.

Cure vs Healing

Cure alters what is; *Healing offers what might be.*

Cure is an act; *Healing is a process.*

Cure acts upon another; *Healing shares with another.*

Cure manages; *Healing touches.*

Cure seeks ultimately to conquer pain;

Healing seeks to transcend the pain.

Cure ignores grief; *Healing assumes grief.*

Cure encourages mystery as a challenge for understanding;

Healing encounters mystery as a ready channel for meaning.

Cure rejects death and views it as defeat;

Healing includes death among the blessed outcomes of caring.

Cure may occur without healing;

Healing may occur without cure.

Cure separates body from soul; *Healing embraces the soul.*

Cure tends to isolate; *Healing tends to incorporate.*

Cure combats illness; *Healing fosters wellness.*

Cure fosters function; *Healing fosters purpose.*





Upcoming Educational Opportunities:

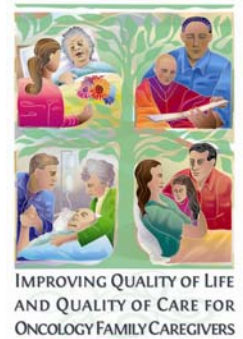
ExCEL in Social Work

ExCEL is a National Cancer Institute-funded training that is a collaborative partnership with the Association of Oncology Social Work (AOSW), the Association of Pediatric Oncology Social Workers (APOSW), and City of Hope. We invite your participation in this multi-dimensional training program to enhance oncology social workers' leadership skills associated with the Institute of Medicine's (2008) recommendations for quality psychosocial care. Selected applicants will receive: waived registration fee, extensive course materials, hotel stay, meals associated with the Pre-Conference and continuing education credits. The Pre-Conference dates are as followed: AOSW: May 2-3, 2011 in St. Louis, MO and APOSW: May 9-10, 2011 in Atlanta, GA. The application deadlines are: AOSW Pre-Conference: January 21, 2011 and APOSW Pre-Conference: January 28, 2011. See <http://www.cityofhope.org/education/health-professional-education/nursing-education/excel/Pages/default.aspx> for further course details and application information.



Family Caregivers

The City of Hope will be sponsoring a three-day course, Improving Quality of Life and Quality of Care for Oncology Family Caregivers, in Anaheim, CA on July 13-15, 2011. The primary aim of this National Cancer Institute-funded oncology educational initiative is to implement a national education program for professionals to improve support for oncology family caregivers. The program focuses on educating competitively chosen multidisciplinary teams of two from cancer institutions across the nations to improve support for oncology family caregivers. The application deadline to apply for this Course is February 1, 2011. More info is available at: <http://www.cityofhope.org/education/health-professional-education/nursing-education/family-caregiver-project/Pages/default.aspx>.



End-of-Life Nursing Education Consortium (ELNEC) Trainings

ELNEC provides nurses and other health professionals with essential training in end-of-life/palliative care as well as equipping participants with knowledge and resources to share with colleagues. To date, over 10,000 professionals representing all 50 states have received training through these national Train-Trainer programs and are passing along this new expertise in educational and clinical settings. Don't miss the opportunity in 2011 to join with our nursing colleagues in improving palliative and end-of-life care across the nation! ELNEC training courses are offered throughout the year. Check out more information on ELNEC Trainings and scheduled events for 2011 at: <http://www.aacn.nche.edu/elneec/2011CourseSchedule.htm>.



Survivorship Training Course for Nurses

The Survivorship Training Course for Nurses (and others) evaluates the components of survivorship care: surveillance, detection, prevention and healthy life choices. It also educates on interventions for consequences of cancer and treatment, coordination and communication of survivorship care plans. This training course will be offered at the City of Hope in Duarte, CA on May 2-3, 2011. The application deadline is March 28, 2011. Please contact Liz Gourdine for more information and to register at mgourdine@coh.org or 626-256-4673, x63488.



Pics from the ACE Reunion Conference

