

City of Hope is a biomedical research, treatment and education center dedicated to the prevention, treatment and cure of cancer and other life-threatening diseases. Our mission is to shorten the time from initial research idea to new treatment, quickly bringing cures to patients who need them.

Since its founding in 1913, City of Hope has achieved numerous scientific breakthroughs and pioneered many lifesaving procedures that have impacted treatment worldwide.

Here are the latest facts about this institution.

INSTITUTIONAL DISTINCTIONS

- City of Hope is one of 40 Comprehensive Cancer Centers, the highest designation bestowed by the National Cancer Institute and a recognition of excellence in cancer treatment, research, prevention and education.
- City of Hope is a founding member of the National Comprehensive Cancer Network, an alliance of the 21 leading cancer centers that defines and sets standards for cancer care nationally.
- City of Hope maintains the No. 1 hematology program, No. 1 prostate cancer program and No. 1 sarcoma program in California, and ranks No. 2 in the state for its breast cancer and musculoskeletal programs, based on the number of patients treated. (Source: Office of Statewide Health Planning and Development)
- City of Hope has been designated an islet cell transplant center by the Juvenile Diabetes Research Foundation (JDRF). JDRF centers are programs at select institutions — focused on islet transplantation, diabetes complications and immunology — that enable scientists and clinicians to collaborate and turn new ideas into treatments for diabetes.
- At any given time, City of Hope conducts more than 300 clinical studies, involving 25 percent of its patients. The national average is less than 5 percent.
- City of Hope was awarded more than \$59 million in research grants and received nearly \$190 million in revenues from patented technologies in FY2009.

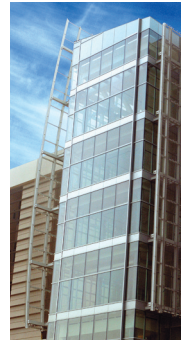
RESEARCH AND TREATMENT MILESTONES

- Numerous breakthrough cancer drugs, including Herceptin, Rituxan, Avastin and Erbitux, are based on technology pioneered by City of Hope and are saving lives worldwide.
- Millions of people with diabetes worldwide benefit from synthetic human insulin developed through research conducted at City of Hope.
- City of Hope has the largest program for prostate cancer in California, and its surgeons have more experience performing robotic urologic procedures than anyone else in the nation.
- A pioneer in bone marrow transplantation, City of Hope has performed more than 9,700 marrow and stem cell transplants, and operates one of the largest, most successful programs of its kind in the world.
- Patients with HIV-related lymphoma could soon get a new stem-cell treatment — developed in part at City of Hope — that will attempt to knock down virus levels while also eradicating the cancer. The treatment is one of the first to use specially engineered, HIV-fighting genes that are inserted into patients' own stem cells. The cells would then be reinfused into HIV-infected patients during a bone marrow transplant. If successful, the new treatment could allow patients' bodies to produce HIV-resistant white blood cells indefinitely.

RESEARCH QUANTIFIED

One of 40 NCI-designated Comprehensive Cancer Centers

40



Performed more than 9,700 bone marrow and stem cell transplants

9,700

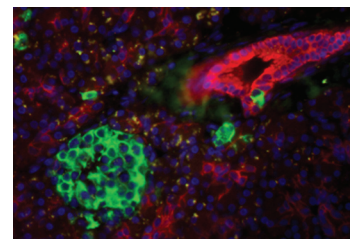


Awarded more than \$59 million in research grants

59

Designated one of 10 islet cell resource and transplantation centers in preclinical trials.

10



Founding member of the National Comprehensive Cancer Network's top 21 cancer centers that defines and sets standards for cancer care

21

Currently conducts more than 300 clinical studies

300

RECENT RESEARCH BREAKTHROUGHS

Improving early detection of prostate cancer

City of Hope investigators are working to determine whether or not expressed prostate secretions (EPS) can be used to rule out prostate cancer in patients. These studies use molecular biology to identify whether or not cancer cells are present in EPS. Researchers hope to develop a new non-invasive tool that may eventually eliminate the need for invasive prostate cancer testing such as a prostate biopsy.

New hope for advanced breast cancer

Researchers believe that sorafenib, the first Food and Drug Administration-approved oral anticancer agent used to treat liver and kidney cancers, may hold potential for advanced breast cancer treatment in combination with other drugs.

City of Hope is conducting a clinical trial of sorafenib in combination with the chemotherapeutic agent Navelbine, for women with the most advanced form of breast cancer. While the trial is in its early phase, stabilization of cancer growth in a group of women with stage 4 breast cancer has been observed.

Using the immune system to fight brain cancer

City of Hope researchers are genetically reprogramming disease-fighting immune cells to treat malignant glioma, an aggressive and often lethal form of brain cancer. Glioma's location in sensitive brain tissue makes it very difficult to find and treat. Genetic reprogramming is a novel approach to treating this cancer, in which T cells are engineered to reboot the immune system to recognize and attack tumor cells, leaving the normal brain cells in the vicinity unharmed.

Researchers are also exploring the use of nanotubes, tiny molecules built out of carbon atoms, and neural stem cells as vehicles to deliver these immune stimulating therapies directly to the tumor cells.

Survivorship and support

Over the past two decades, new techniques to detect prostate cancer early have boosted survival rates for men with all stages of prostate cancer. Addressing the unique needs of these survivors, City of Hope's Prostate Cancer Survivorship Program provides comprehensive, long-term follow-up care to improve overall quality of life.

Patients receive personalized health plans based on treatment history and comprehensive monitoring for possible cancer recurrence. The program, part of City of Hope's Center for Cancer Survivorship, is unique nationally, as it combines both multidisciplinary follow-up care and clinical research to help improve the overall quality of life and long-term survival of prostate cancer patients.

UNPARALLELED RESOURCES

- City of Hope created a new model for rapidly translating innovations from the research lab to the clinical setting with its Center for Biomedicine & Genetics (CBG), which allows scientific and clinical investigators the freedom to test and refine the most promising new therapeutics. Recognized as one of the nation's premier academic biologic manufacturing facilities, the CBG provides the isolation, environmental control and security needed for the manufacture of products for human use.
- City of Hope established a consortium among leading academic institutions in Southern California, known as the Southern California Islet Consortium, to further the study of islet cell transplantation as a possible cure for type 1 diabetes. In islet cell transplantation, insulin-producing beta cells are taken from a donor's pancreas and transferred into a person with diabetes. Once transplanted, the donor islets begin to make and release insulin.

EXPANSION EFFORTS

- The Arnold and Mabel Beckman Foundation awarded City of Hope \$20 million for construction of a new cancer immunotherapeutics and tumor immunology building. The center provides a self-contained and integrated research environment where novel immunotherapeutic approaches to cancer treatment will be conceived, developed and refined.
- A \$20 million gift from the Leslie and Susan Gonda (Goldschmeid) Foundation will further City of Hope's nationally-recognized diabetes research program. The gift supports construction of a four-story addition to the 41,000-square-foot Leslie and Susan Gonda (Goldschmeid) Diabetes and Genetic Research Center. The expansion will house programs that

integrate research into diabetes, metabolic disease and other related conditions.

- A gift from the Sheri and Les Biller Family Foundation established a new center at City of Hope to assist patients and families facing cancer and other life-threatening diseases. The 3,000 squarefoot Sheri & Les Biller Patient and Family Resource Center is a uniquely comprehensive model that integrates and expands a wide range of important patient support services, including health education, psychological services, healing arts programs and end-of-life and bereavement care programs.

HOW CITY OF HOPE ADDS UP

- City of Hope is ranked as one of "America's Best Hospitals" in cancer and urology by *U.S. News & World Report*.
- City of Hope received full accreditation by the Joint Commission, the nation's most widely recognized health care accrediting body.
- City of Hope is one of only eight cancer hospitals nationwide listed as *AARP Magazine's "Doctors Faves"* — hospitals that doctors indicated they are most likely to refer patients to for extremely difficult cancer cases.
- The National Heart, Lung, and Blood Institute (NHLBI), part of the National Institutes of Health, awarded City of Hope an \$8.6 million contract to facilitate stem cell research from laboratory to clinical study. The five-year contract is the first from the NHLBI to focus on development and manufacturing of stem cell therapies. The contract establishes City of Hope as the official partner for NHLBI-designated researchers who are developing cellular therapies derived from human embryonic stem cells and mature cells reprogrammed to mimic embryonic stem cells
- Numerous City of Hope physicians are featured in "America's Top Doctors for Cancer," a consumer guide to the nation's top cancer specialists.
- *Forbes*, *The Chronicle of Philanthropy* and *The Nonprofit Times* featured City of Hope in their annual surveys of the nation's top nonprofit organizations.