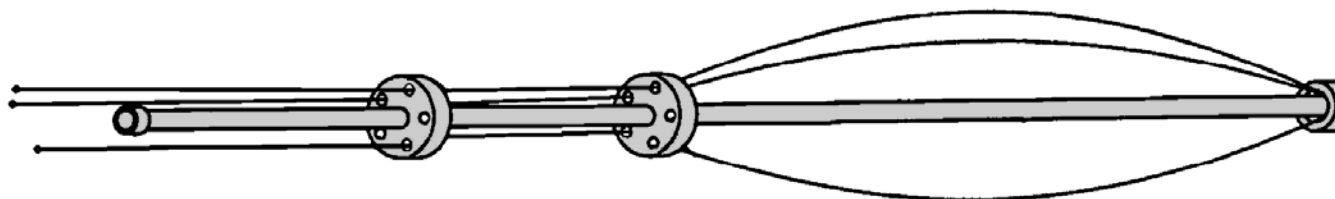




Minimally Invasive Expandable Surgical Retractor for Internal Body Spaces



Lateral view of an example Expandable Retractor as it begins to open

DESCRIPTION

An expandable surgical retractor for use with either minimal incision surgery or natural orifice surgery. This retractor consists of a central rod surrounded by multiple flexible wires designed to create an open space for the illumination and visualization of the internal surgical field.

KEY ASPECTS

- Compatible with both robotic and manual endoscopic procedures.
- Well adapted for use in the peritoneal cavity and intrathoracic regions.
- Avoids scarring associated with Open Retractor surgery.
- Forward and back illumination of the surgical field allowing multiple angles of visualization.
- Flexible wires are deployed via selective pressure to avoid damaging potentially compromised tissues.
- Avoids complications associated with Insufflation and Hydrostatic Pressure.

INTELLECTUAL PROPERTY

Title	US Patent Number	Issued
Expandable Surgical Retractor for Internal Body Spaces Approached with Minimally Invasive Incisions or Existing Orifices	7,390,298	6/24/08

CONTACT

Matthew Grunseth, M.B.S.
Manager, Office of Technology Licensing
Telephone: (626) 471-7221 | Email: mgrunseth@coh.org

This material is a summary of public domain and non-confidential City of Hope information. Additional material may be disclosed under a confidentiality agreement.