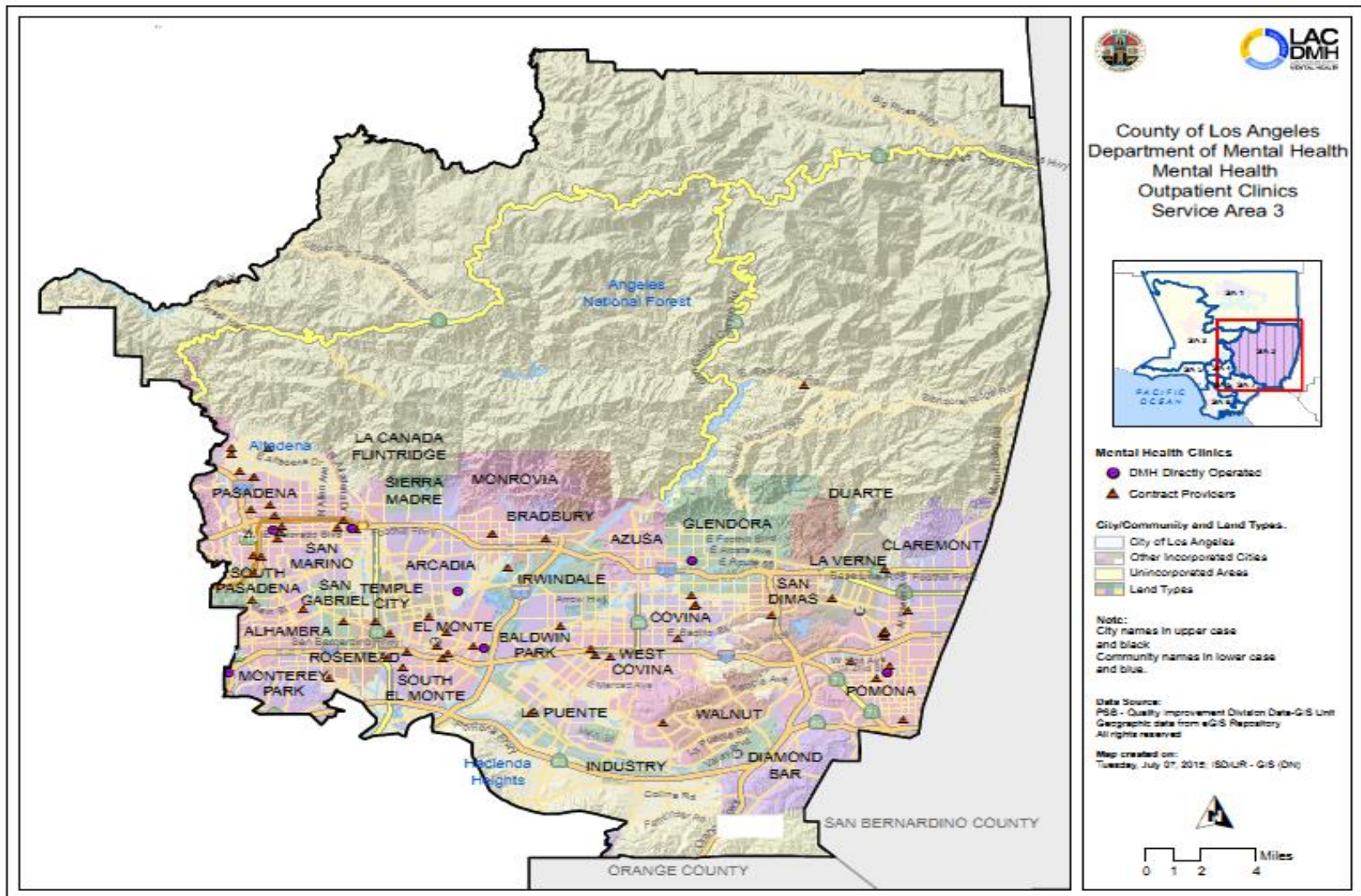




LOS ANGELES COUNTY DEPARTMENT OF MENTAL HEALTH SERVICE AREA 3 OVERVIEW HEALTH NEIGHBORHOODS

Evelyn Lemus, LCSW

Map of Service Area 3



SA 3 Overview

DMH Directly Operated Programs

- Arcadia Mental Health Center
- East San Gabriel Valley Mental Health Center
- SB 82 Mobile Triage Team
- PMRT
- MET (law enforcement collaboration)
- Specialized Foster Care
 - Pomona
 - Glendora
 - Pasadena
 - El Monte
 - Covina
- Various other County-Wide Programs

SA 3 Overview (cont'd)

Contracted Services

- Over 100 provider sites
- 18 Legal Entity Providers under SA 3 Administration
- Additional Group Home contracts under CSOC
- Full array of services across levels of care and age groups
- Variety of sites including clinics, schools, and primary care facilities

LA County Directly Operated Adult Programs

Arcadia Mental Health Clinic

- ▣ Triage
- ▣ General adult outpatient mental health services
- ▣ Medication support
- ▣ Dual Diagnosis Services
- ▣ Case management
- ▣ Individual and group therapy using Evidence-Based Practices (EBPs)
- ▣ Older Adult and Adult Field Capable Services
- ▣ Wellness

LA County Directly Operated Adult Programs (cont'd)

East San Gabriel Valley Mental Health

- ▣ Triage
- ▣ General adult outpatient mental health services
- ▣ Medication support
- ▣ Dual Diagnosis Services
- ▣ Case management
- ▣ CalWorks/GROW
- ▣ Individual and group therapy using Evidence-Based Practices (EBPs)
- ▣ Wellness
- ▣ Full Service Partnership (FSP- Adult)
- ▣ SB82

Contracted Adult and Children Providers



All Contracted Providers provide: Individual and Family Therapy and Support, targeted case management, collateral, crisis intervention, medication support and community outreach and engagement.

What is the Health Neighborhood Initiative?

- The HN brings together health, mental health, substance use disorder providers, and community at large to establish and enhance collaborative relationships.
- Providers come together with vital input from the community to enhance the health and wellbeing of neighborhood residents.

Health Neighborhoods

□ **Community Change Model**

- Achieve community health and wellness
- Address social determinant of health
- Community-driven, focused on policy and system change

Health Neighborhoods

□ Service Delivery Model

- Improve **access** through integrated mental health, health, substance abuse and public health services for all age groups.
- Improve **quality** of services
- Improve **coordination** of care
- **Contain costs** through effective communication among providers

HEALTH NEIGHBORHOODS: PUTTING THE PIECES TOGETHER

HEALTH NEIGHBORHOOD

Community Change

- Achieve community health & wellness
- Address social determinants of health
- Community-driven and focused on policy & system change

Service Delivery

- Improve access through integrated mental health, health, substance use disorder treatment and public health services
- Improve quality of services through coordination
- Contain costs through effective communication among providers

HEALTH NEIGHBORHOOD

HEALTH NEIGHBORHOOD

HEALTH NEIGHBORHOOD

COUNTY OF LOS ANGELES HEALTH NEIGHBORHOOD CONCEPTUAL FRAMEWORK



HN participants commit to:

- Work with each of the other parties to outline the array of services and supports provided.
- Exchange information between providers to the extent permitted by law.
- Develop agreed upon methods of communication between participants.
- Refer to & coordinate care with partnering agencies and respond so the outcomes are clear, consistent, and timely.
- Identify key contacts within each participating agency for both urgent follow-up and problem resolution.

Current Health Neighborhoods

Total: 13

- ❑ **San Gabriel Valley (SPA 3):**

- ❑ **El Monte Health Neighborhood**

- ❑ In existence since 2015

- ❑ Approximately 39 Providers

- ❑ 16 MH, 7 PC, 4 SUD, 12 other

- ❑ **East San Gabriel Valley Health Neighborhood**

- ❑ In existence since October 2017

- ❑ Approximately 35 providers

- ❑ 13 MH, 7 PC, 4 SUD, 11 Other

SA 3 Navigators

Supervisors	Children (0-15)	TAY (16-25)	Adults (25-59)	Older Adults (60 +)
Child/TAY: Frances Liese (626) 430-2914 Adult: Eugene Marquez (626) 430-2915	Vanessa Torres: (626) 430-2948	Socorro Ramos (626) 430-2949	Eugene Marquez (626) 430-2915	Nicole Beaubien (213) 735-2327

El Monte Health Neighborhood Website

The screenshot shows a web browser window displaying the homepage of the El Monte Health Neighborhood website. The browser's address bar shows the URL <https://emhealthneighborhood.wixsite.com/emhealthneighborhood>. The browser's menu bar includes File, Edit, View, Favorites, Tools, and Help. The browser's toolbar shows several tabs, including 'El Monte Health Neigh...'. The browser's status bar shows the system tray with the time 3:37 PM and date 7/30/2018.

The website's header includes a navigation menu with the following items: [Home - Casa](#), [Find Resources - Encuentra R...](#), [Events - Eventos](#), and [More](#). Below the navigation menu is a search bar with the text 'Health Neighborhood' entered.

The main content area features a large, blurred background image of a sunset or sunrise over water. In the center of the image is a circular logo depicting a stylized lotus flower with three petals and a wavy line below it. Below the logo, the text reads: 'Welcome - Bienvenido El Monte Health Neighborhood'. Below this text, there is a disclaimer in English: 'This webpage is only intended to serve as a resource directory for community members and community providers only. If you are having an emergency please call 911.' Below the disclaimer, there is a disclaimer in Spanish: 'Esta página web solo sirve como un directorio de recursos para miembros de la comunidad y proveedores de la comunidad. Si tiene una emergencia, llame al 911.'

At the bottom of the page, there is a section titled 'Need More Help? Try the following links.' followed by the text '¿Necesitas más ayuda? Pruebe los siguientes enlaces.' Below this text are three logos: 'Profiles of Hope', 'one degree', and 'thero.org'.



Evelyn Lemus, LCSW

(626) 430-2937

Elemus@dmh.lacounty.gov