




# International Patient Services



# City of Hope is a world leader

in research, treatment and prevention. Here, doctors and scientists dedicate their lives to transform laboratory breakthroughs into treatments that outsmart cancer. Compassion is at the heart of our approach. We care for the whole person, not just the body, so your life after cancer can be rich and rewarding — no matter where you are from.

 City of Hope.



- Our scientists, physicians and manufacturing facilities work hand in hand to quickly turn breakthrough discoveries into lifesaving therapies.
- We have performed more than 16,000 robotic procedures for prostate, kidney, colon, liver, bladder, gynecologic, oral and other cancers.
- We have one of the largest, most successful bone marrow and stem cell transplant programs in the U.S. (more than 18,000 bone marrow and stem cell transplants performed). Between 2020 and 2021, we had the highest transplant volume in the U.S.\* City of Hope's bone marrow transplant outcomes are exceptional, according to the Center for International Blood & Marrow Transplant Research.
- We are among the worldwide leaders in clinical trials, conducting more than 800 trials every year (including CAR T and natural killer trials). This allows patients to benefit from the most innovative treatments available.
- We lead the advancement of precision oncology research and treatment. We offer lifesaving tools for cancer prevention and early detection. For example, when a patient is found to carry a gene that increases susceptibility to cancer, such as a BRCA1 mutation, the Center for Precision Medicine also makes genomic testing available to their family members.
- Our revolutionary Cancer Immunotherapeutics Program has yielded a growing portfolio of new drugs and therapies. Numerous breakthrough cancer drugs, including Herceptin, Erbitux, Rituxan and Avastin, are based on technology pioneered by City of Hope, saving lives around the world.
- We are ranked among the top 10 "Best Hospitals" in cancer by U.S. News & World Report.

*\*Source: Be The Match*



● City of Hope serves patients from around the world.

# Why choose City of Hope?

Breakthrough drugs and innovative treatment available at City of Hope

Best medical care with compassion and cultural sensitivity

Application of precision medicine, including advanced genetic testing and immunotherapy

# The Center for International Medicine: Here to support international patients

Traveling abroad for medical care can be an overwhelming process. The Center for International Medicine at City of Hope is here to assist your family and you to navigate this journey. From getting a remote second opinion session prior to your decision to travel, to medical record reviews, pre-travel arrangements, future appointment coordination and many other needs, we are here to support you every step of the way. Once you arrive, a linguistically proficient patient coordinator will be assigned to assist you.



*City of Hope felt like home. That really helped me in my treatment and recovery. The environment and culture of City of Hope made a big difference. I am so thankful to City of Hope and the Center for International Medicine for taking me on.*

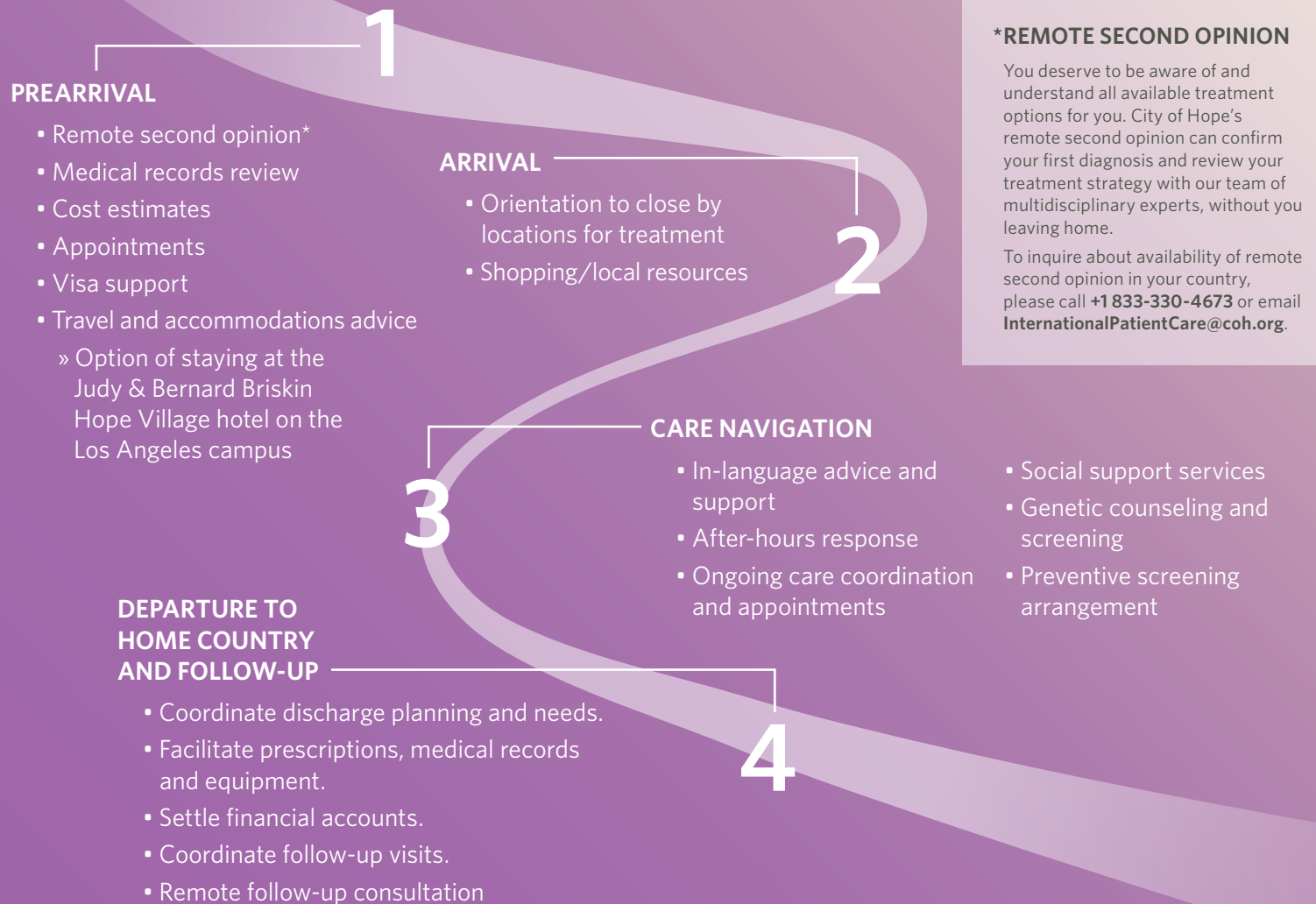
— **MICHAEL TAN**  
Patient from Philippines



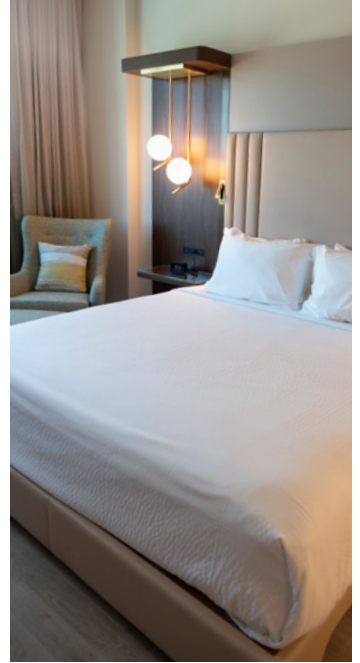
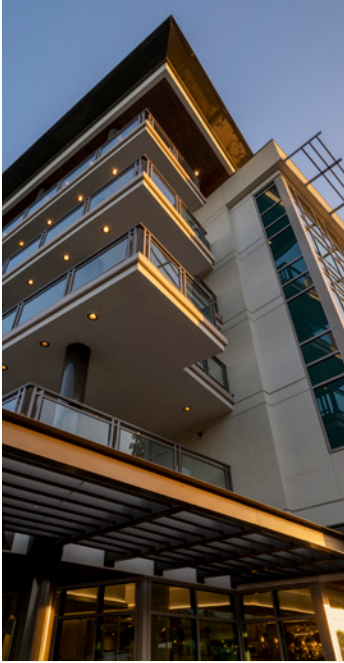
*Everyone at City of Hope and the Center for International Medicine has been devoted to my healing with all their hearts and souls. The level of compassion, ethics and expertise I have not seen anywhere else.*

— **MING MING ZHANG**  
Patient from Beijing, China

Each person will be provided with tailored, personalized assistance throughout their medical journey.







# The Judy & Bernard Briskin Hope Village, a brand new hotel on our Los Angeles campus, is now open.

The hotel is available exclusively to clinically qualifying City of Hope patients and families. It is equipped with special amenities to foster a nurturing atmosphere. It will offer peace of mind and unparalleled convenience to our patients, especially those who travel from afar for our innovative cancer care. The Center for International Medicine has an office located on the hotel's first floor to support international patients.

- Five-story, 115,000 sq. ft.
- 116 studio rooms with two sleeping areas separated by a partition
- 27 standard rooms
- 15 pairs of rooms with connecting doors, offering additional flexibility for families
- Four one-bedroom suites



# Our locations

City of Hope's national network has locations throughout the United States. In addition to our 100+ acre garden-filled campus in Duarte (near Los Angeles), our newly opened cancer center in Irvine, California, and our hospitals in Chicago, Atlanta and Phoenix, there are nearly 40 clinical network sites throughout Southern California and other states. Our aim is to bring hope to you, wherever you are.



**Center for International Medicine**  
1500 E. Duarte Road, Duarte, CA 91010  
1-833-330-HOPE (833-330-4673)  
InternationalPatientCare@coh.org

[CityofHope.org/CIM](http://CityofHope.org/CIM)