

POSITIVE IMAGE CENTER<sup>SM</sup>

# How to Choose a Wig

## Things to Consider

- How often will you wear it?
- How long will you use it?
- How much money do you want to spend?
- What is the climate around you?



### Tip

If you want to wear a wig that is in line with your current hairstyle, snap a few pics of your hair before it begins shedding.



## Types of Wigs

Wigs vary according to the materials and construction.

### Synthetic Wigs

**Pros:** Synthetic wigs are often affordable and durable. They require minimal styling and keep their color well.

**Cons:** You cannot dye synthetic hair wigs, and you cannot use heat tools like curling irons or flat irons to style.

### Human Hair Wigs

**Pros:** Human hair wigs can look and feel more natural than synthetic options. Human hair wigs have the longest lifespan of any wig fiber type, often lasting beyond a year depending on how often they are worn and how well they are maintained.

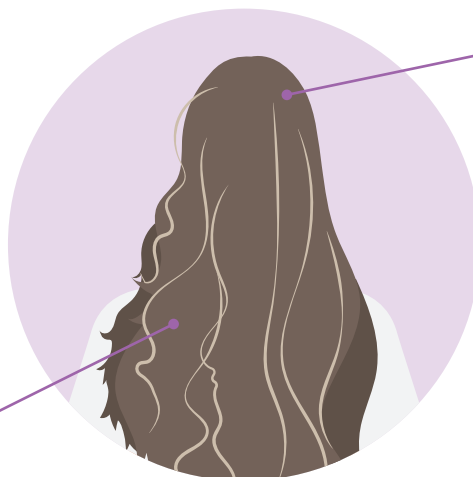
**Cons:** Human hair wigs can be more expensive.

## Wig Construction Options

	Traditional Cap	Lace front	Monofilament
<b>Construction</b>	Wefted wigs are made of rows of hair strands that are sewn onto fabric.	This option features a sheer, lace fabric with hand-tied hair at the front hairline.	These wigs are made by hand-tying hairs into a lace wig cap.
<b>Pros</b>	Temperature-wise, they are the coolest option, plus they offer volume.	This type of construction results in a more natural look with movability.	This type of construction results in a natural look that is easy to style. They are cool, lightweight, breathable and feature a less voluminous look. You can buy a full wig or just a crown, part or topper.
<b>Cost</b>	Wefted wigs are the least expensive and prices range from \$75 to \$150.	Prices range from \$150 to \$300. Custom lace front wigs will cost more.	Prices range from \$200 to \$300.

## How Climate Can Affect Wigs

**Synthetic hair wigs** are very resistant to humidity and simply do not frizz like natural hair can. Hot weather or body heat can cause synthetic hair to tangle.



**Human hair wigs** will react to the hot weather in the same way natural hair would; they can lose shape and style or go frizzy with the humidity.

### City of Hope Is Here to Help

The Positive Image Center has a variety of wigs and textures to choose from. Stop by today for a custom wig fitting!

For more information on wig resources, please stop in at or call the Positive Image Center, Monday to Friday, between 8 a.m. and 4 p.m.

**1500 East Duarte Road, Duarte, CA 91010**

**626-218-3842**

**[PositiveImageCenter@coh.org](mailto:PositiveImageCenter@coh.org)**

