

Application Details

Priority Deadline

December 15

Regular Deadline

Rolling admission

Application Requirements:

1. The online application includes:

- Personal statement (describe how the MSTM program will enhance your future career options and increase your skill set for a career in the biomedical research or life sciences industry)
- Curriculum Vitae
- Educational Background
- Recommenders' contact information

2. Transcripts from every institution of higher education you have attended

- Unofficial copies can be used for admissions purposes; official transcripts will be required before matriculation.

3. Two Letters of recommendation

4. Standardized tests

- (optional) ONE of the following tests: Graduate Record Examination (GRE), Medical College Admission Test (MCAT), Graduate Management Admission Test (GMAT) or United States Medical Licensing Examination (USMLE)
- Test of English as a Foreign Language (TOEFL) scores are required for all foreign students and must be sent by the Educational Testing Service. Only foreign students who have completed a four-year bachelor's degree in the United States are eligible to petition to waive this requirement.

5. Application submission is fee. [Apply Now](#)

City of Hope

1500 E. Duarte Road
Duarte, CA 91010-3000
(877) 715-GRAD (4723)
gradschool@coh.org

MASTER OF SCIENCE IN

Translational Medicine

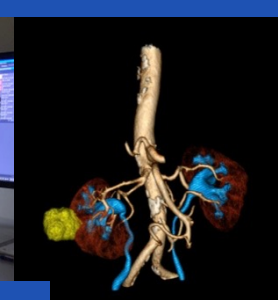
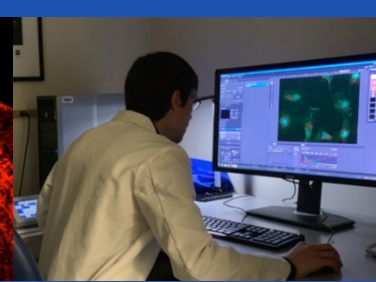
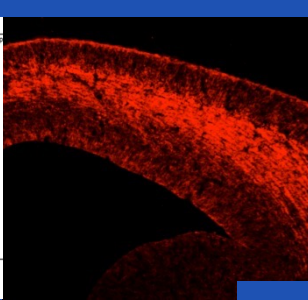
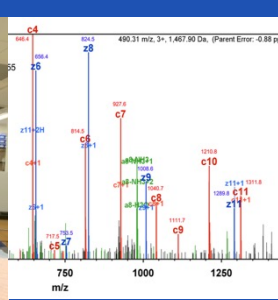
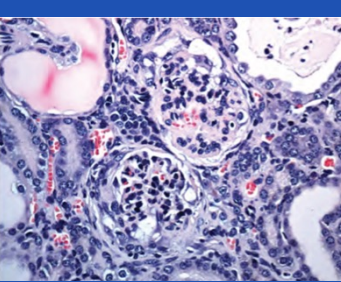


The Master of Science in Translational Medicine (MSTM) is a two-year master's degree program at the Irell & Manella Graduate School of Biological Sciences at City of Hope. This program is aimed at providing students with an applied research experience and an in-depth understanding of how to translate basic research into medical products from the perspectives of both academic research (discovery) and downstream commercial development. Graduates will be uniquely positioned to begin research laboratory careers in the biotech/pharmaceutical industry, clinical or academic laboratories, or pursue further education at the doctoral level, medical education or both.

For more information about the MSTM program, visit us at
CityofHope.org/MSTM

RESEARCH SPOTLIGHT

AIDS & Pathogens
Bioinformatics & Population Sciences
Cancer Etiology & Cancer Biomarkers
Diabetes & Metabolism
Drug Discovery, Development & Delivery
Genomics & Epigenetics
Hematopoiesis & Hematological Malignancy
Immunology & Immunotherapy
Molecular & Cellular Aging
Stem Cell Biology & Stem Cell Therapy



Program Learning Outcomes

- Generate hypothesis and perform hypothesis-driven research
- Design research and methodology, and analyze and report data results
- Assess the literature, identify knowledge gaps and convey findings to the scientific community
- Plan the translation of basic science and engineering discoveries into products and processes that benefit society
- Communicate effectively in a research environment composed of scientists, engineers and business professionals
- Adhere to ethical principles in research, development and business issues inherent in the bioscience industries
- Tackle complex problems and contribute productively on an interdisciplinary team

Technical Training

- Integrative Genomics and Bioinformatics
- Analytical Cytometry
- Metabolic Phenotyping
- Mass Spectrometry
- Light/Confocal Microscopy & Digital Imaging
- Integrated Islet Distribution
- CRISPR Technology
- Bio-methodology & Handling
- Anesthesia & Aseptic Techniques
- 3D Oncologic Imaging

Program Curriculum

Course Name	credit
Introduction to Biomedical Research Technologies	2.0
Preclinical Models for Diseases	1.5
Introduction to Biomedical Data Science	1.5
The Science of Health Disparities	1.5
Pharmaceutical Discovery and Development	3.0
Statistical Thinking	1.0
Oncology Clinical Trials Design	1.0
Introduction to Clinical Research Development	2.0
Introduction to Fundamentals of Scientific Research	1.5
Fundamental Papers in Applied Medicine	2.0
Current Topics in Disease Mechanisms	2.0
Clinical Genomics & Precision Medicine	1.0
Science Communications	0.5
Professional Development	1.0
Scientific Research Rigors and Ethics	1.0
Independent Research	7.5
Master's Thesis Research	30.0
TOTAL	60.0

"This program provides students with the opportunity to perform cutting-edge research that discovers fundamental mechanisms of diseases and develops novel therapeutic strategies at City of Hope – a world-renowned biomedical research institute with expertise in therapeutics, population science and stem cell research."

David Ann, Ph.D. *Dean*

Yilun Liu, Ph.D. *Vice Dean and Program Director*

Irell & Manella Graduate School of Biological Sciences, City of Hope