

Breast Cancer Research and Care at City of Hope

Driving Innovation, Delivering Hope

Breast cancer is one of the most common cancers in the United States. More than 300,000 women are diagnosed with breast cancer each year, and more than 40,000 will die from the disease. In recent years, there have been immense advances in the screening, early detection and successful treatment of breast cancer. Today, there is an urgent opportunity to build on that success—expanding access to the latest therapies while continuing to push the boundaries of medicine to create cures for all types of this disease.

City of Hope is a world leader in the research and treatment of breast cancer. We are known for our superior survival outcomes and deeply personalized care. Compassion is at the heart of our approach. When we take your hand, we don't let go.

As a founding member of the National Comprehensive Cancer Network, City of Hope plays a critical role in defining best practices for breast cancer care throughout the country. Our close involvement in the development of new approaches means our physicians can offer patients the newest treatments right away based on emerging data.

A New Chapter in Breast Cancer Care

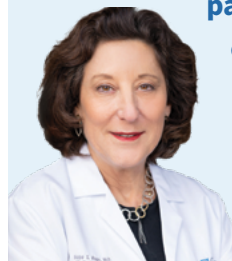
City of Hope is bringing advances in specialized cancer care to more women across the country, ensuring that life-saving treatments are never out of reach. Our growing national system includes a headquarters in Los Angeles, a brand-new Orange County, California campus, and hospitals and outpatient clinics across Southern California, Phoenix, Chicago and Atlanta. We are now within driving distance of 90 million Americans.

City of Hope recently named renowned breast cancer physician-scientist **Hope S. Rugo, MD**, to lead the expansion of women's cancers research and clinical care across the enterprise. She joins more than 150 clinicians and researchers who are working together to elevate breast cancer care nationwide, as they translate cutting-edge research into real-time patient care.

With a gift today, you can help us speed the development of new therapies and spread hope and healing to patients and families in need.



“There is so much we’re doing at City of Hope—in the labs and the clinics—to improve early detection, fight treatment-resistant cancers, target early relapse, reduce toxicity, and harness genomic analyses to personalize care. Philanthropic partnership helps drive everything we do.”



Hope S. Rugo, MD,
Director, Women's Cancers
Program and Division Chief,
Breast Medical Oncology



Expanding Access to the Best in Breast Cancer Care

In the rapidly evolving field of oncology, there is a gap between the cancer discoveries taking place and the people who can actually access these breakthroughs. Our goal is to change that.

Through the growth of our network of cancer centers, we are extending the reach of world-class cancer care to more people in more communities. Every patient who enters the doors of any of our clinical locations gains access to City of Hope's broad array of leading-edge breast cancer treatments, the shared knowledge and expertise of renowned breast cancer clinicians working across our system, and groundbreaking therapies that are continuously being pioneered by our faculty.

Bringing Clinical Trials to Patients Nationwide

Clinical trials that test new therapeutic approaches can make a lifesaving difference for patients with treatment-resistant disease. City of Hope is one of the top oncology clinical trial providers in the nation. We have **more than 100 clinical trials in breast cancer** underway or in development, and we are committed to giving more patients early access to the breakthrough therapies of tomorrow.

Creating a Brighter Future

- **City of Hope outperforms the national average** for breast cancer survival by 50%.
- We use **game-changing precision medicine** to pinpoint the unique genetic aspects of a patient's breast cancer to determine which treatments will deliver the best outcomes.
- We are **trailblazers in immunotherapy**, which harnesses a patient's own immune system to recognize and eliminate cancer.
- Our specialized surgeons have expertise in the most innovative and **advanced surgical techniques**.
- We offer intraoperative radiation therapy, delivering a single concentrated dose at the time of breast cancer surgery, **replacing weeks of daily radiation treatment**.
- Our researchers developed a blood test that aims to **predict if a newly diagnosed breast cancer patient may relapse** years later, giving physicians an important tool to customize care and improve outcomes.
- City of Hope is a recognized **national model for supportive care** that addresses the whole person and family. We provide access to integrative therapies, psychosocial support, assistance with the visible effects of treatment, pain management, guidance on life after cancer, and so much more.

Philanthropy helps fuel City of Hope's unparalleled care—advancing clinical trials, supporting our talented care teams, purchasing state-of-the-art equipment, and shaping distinctive programs for women undergoing treatment.

Accelerating Progress in Breast Cancer Research

Scientific discoveries made at City of Hope have been powerful drivers of modern medicine, benefiting hundreds of millions of people.

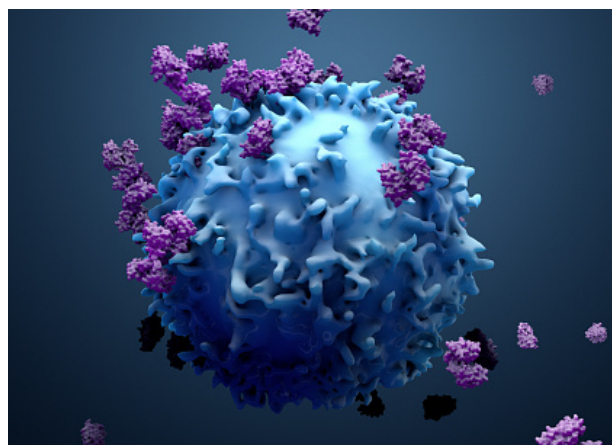
Today, City of Hope scientists and clinicians are advancing exciting progress in breast cancer research and many related areas. To support them, City of Hope has built a unique, expedited pathway for the development of novel therapies. We have three accredited manufacturing facilities that can produce new drugs and biological therapies. This extraordinary capacity makes City of Hope a standout among comprehensive cancer centers and a magnet for some of the most talented breast cancer investigators in the world.

Evolving technologies, including artificial intelligence, are further accelerating research progress and helping us develop new ways to target disease, assess risk, optimize treatment decisions and reduce complications.

New Horizons in Treatment

- City of Hope was the first cancer center in the country to successfully treat solid tumors in the brain with **CAR T cell** therapy. Now, our researchers are developing a new CAR T cell therapy for HER2-positive breast cancer that has metastasized to the brain, teaching a patient's immune cells to seek out and destroy the cancer.
- Many people with early breast cancer are given hormone therapy, also known as endocrine therapy, to reduce the chances of their cancer coming back. City of Hope is participating in a large, international clinical trial, CAMBRIA-2, with the aim of improving outcomes for patients with early-stage hormone-positive breast cancer who are at higher risk of recurrence. The trial will examine if the drug, camizestrant, **a novel endocrine therapy**, results in better outcomes compared to standard hormone therapy.
- City of Hope is part of an innovative national study that is working to better identify **personalized treatment strategies for breast cancer**. Known as the I-SPY 2 trial, this study is assessing the efficacy of novel medications in sequence with chemotherapy to learn which new drug agents are most effective with which types of breast cancer tumors. Researchers are also looking at early indicators of response that may be predictors of treatment success.

Philanthropy is a catalyst for breast cancer research—helping our research teams launch new studies, leverage new technologies and speed promising therapies from the laboratory to the clinic.





Kommah McDowell pictured with her husband and son

City of Hope: Where Cancer Loses and Life Wins

Kommah McDowell was only 29 when she was diagnosed with an aggressive form of breast cancer. At the time, she and her fiancé were told she had just a 5% chance of survival and would not be able to have children.

Today, more than 19 years after coming to City of Hope for a life-changing second opinion, Kommah is a wife, mother, author, keynote speaker, and a tireless advocate for improving patient access to advanced cancer care like the care she receives at City of Hope.

Kommah is one of more than 18 million cancer survivors in the United States. City of Hope is driving innovations to increase the number of cancer survivors through research, early detection, advanced treatments and extensive cancer-focused clinical trials.

City of Hope also offers several fertility preservation options for women diagnosed with breast cancer as well as support and resources to help patients make informed decisions.

Kommah is excited that City of Hope is moving into more communities where “you get the full weight of City of Hope behind you.”

“Had I not gone to City of Hope, I would not be here today,” she said. “There’s a lifesaving difference with a cancer-focused expertise.”



Kommah McDowell with Irene Kang, MD



The Special Needs of Younger Women

Cancer rates in women under 50 are now 82% higher than in men of the same age.

Young women with breast cancer are more likely to have an aggressive form of the disease. They face a higher risk of recurrence. Every therapeutic decision carries long-term consequences for someone with decades of life ahead of her.

City of Hope is working to help women detect cancer at its earliest and most treatable stage. We seek to enroll more young women in breast cancer clinical trials. We are also helping younger women with cancer navigate the unique challenges they face, from preserving fertility to managing young families.

The Power of Your Support

City of Hope was founded in 1913 by volunteers and donors committed to providing care and dignity to those in need. Through the decades, philanthropy has been a driving force behind our research progress and the expansion of care to more patients and families.

Those of you whose lives have been touched by breast cancer are partners in our healing mission.

There are many ways you can help:

- You can make a philanthropic investment in **high-potential breast cancer research**, accelerating urgently needed new treatments through development, testing and clinical trials.
- You can help support our **highly specialized physicians, pioneering scientists and extraordinary nurses** through new chairs, professorships, fellowships and recruitment funds.
- You can invest in **access to City of Hope's world-class care** with gifts to our breast cancer clinical programs and far-ranging support services for women in treatment and beyond.
- You can help us make ongoing investments in **innovative technology and equipment**, ensuring our researchers and medical teams always have the very best.

Thank you for your dedication and partnership in the fight against breast cancer. Your support can make a powerful impact.



“Philanthropy is a cornerstone of City of Hope and a critical tool in our ability to care for our patients and their families through innovations in access, research and care. An investment today will lead to innumerable lives saved long into the future.”

Kristin Bertell, Chief Philanthropy Officer at City of Hope

